

The
**POWERSTATION
FONT
— FAMILY —
USER MANUAL**

AND GUIDE FOR

2

**COLOR
TYPESETTING**

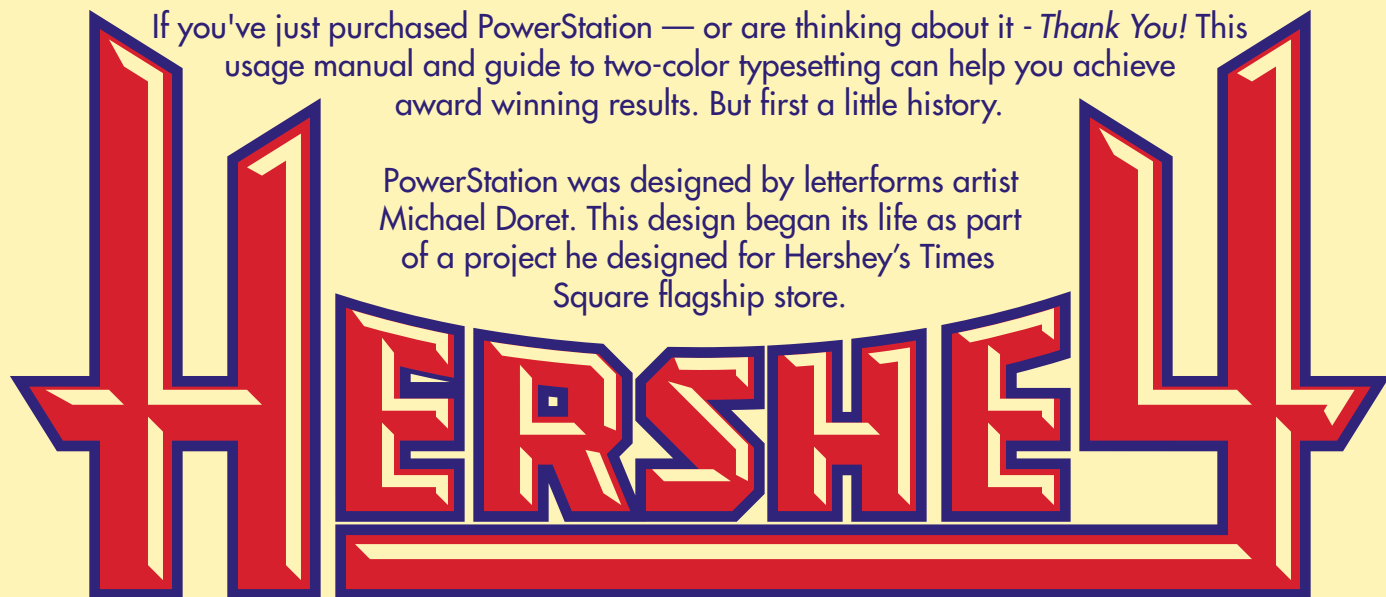
**COMPLETE
8
FONTS**

**MULTI-COLOR CAPABLE
4
LAYERABLE VERSIONS**

THANK YOU!

If you've just purchased PowerStation — or are thinking about it - *Thank You!* This usage manual and guide to two-color typesetting can help you achieve award winning results. But first a little history.

PowerStation was designed by letterforms artist Michael Doret. This design began its life as part of a project he designed for Hershey's Times Square flagship store.



Michael has always loved dimensionality in letterforms – particularly in vintage signage – and has always looked for ways to integrate it into his work. In this case it took the form of faceted letters, reminiscent of the magnetic ones you'd see on movie marquees. Once he decided that this style was well-suited for a font, he realized that he could flesh out this idea with two styles of dimensionality: one predominantly dark and the other predominantly light. They are called "Block" and "Wedge", respectively. In addition, the simple, clean silhouettes of the forms lent themselves to the creation of both "Solid" and "Outline" versions. Michael decided to further increase the usability of this family by adding a "Wide" version of each font, bringing the total number of styles in the PowerStation Family to eight.

Illustrated below are all eight fonts.



POWERSTATION - COLOR - TYPESETTING IN 4 EASY STEPS

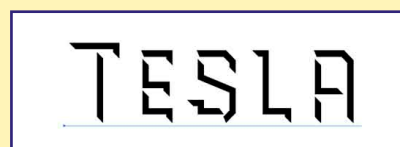
If you've purchased one or more of the PowerStation faceted fonts or the complete PowerStation Family, you now have the ability to set type in two colors. For example, if you purchased "PowerStation Block" your package also included two additional fonts: one called "PowerStation Block High" and one called "PowerStation Block Low". If you want to set your type in two colors you *wouldn't* use the basic font "PowerStation Block". Instead you would use both PowerStation Block High and PowerStation Block Low.



PowerStation Block



PowerStation Block Low



PowerStation Block High

SETTING WORDS IN 2 COLORS WITH POWERSTATION'S LOW AND HIGH VERSIONS



Step 1: Set your desired text in one of the the "Low" versions of PowerStation, then select and copy the type to the clipboard.



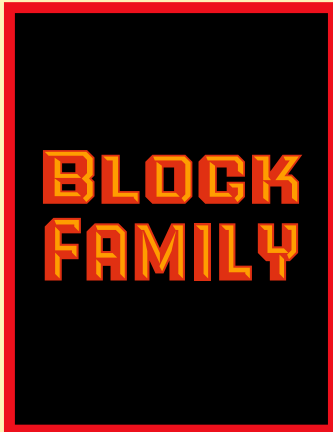
Step 2: Now pick a color for the "Low" version that's on-screen (or leave it black, if that's your preference).



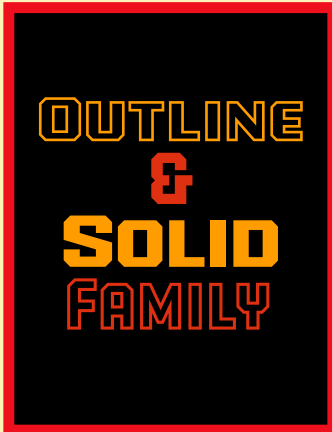
Step 3: Paste the type you had copied to the clipboard directly on top of the text from the previous two steps. While the pasted copy is still selected, change its style to the "High" version of the font.



Step 4: Select a second color for the "High" version that you just pasted over the "Low" version. Voila! You've set type in two colors. That wasn't so difficult, was it?



[CLICK HERE TO VIEW OR PURCHASE](#)



[CLICK HERE TO VIEW OR PURCHASE](#)



[CLICK HERE TO VIEW OR PURCHASE](#)

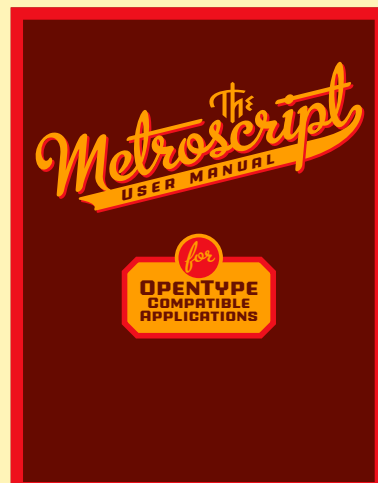


[CLICK HERE TO VIEW OR PURCHASE](#)

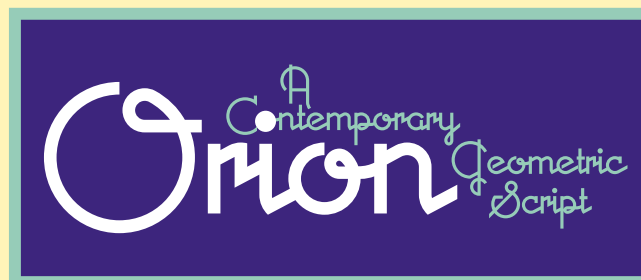
Check out these other fonts from Alphabet Soup
available now at



[Click here to view or purchase Bank Gothic](#)



[Click here to view or purchase Metroscript](#)



[Click here to view or purchase Orion](#)

The PowerStation User Manual © 2008 Michael Doret

ALPHABET SOUP  TYPE FOUNDERS

<http://MichaelDoret.com/AlphabetSoup/soup.html>